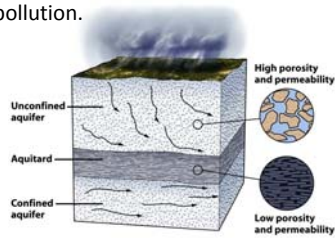
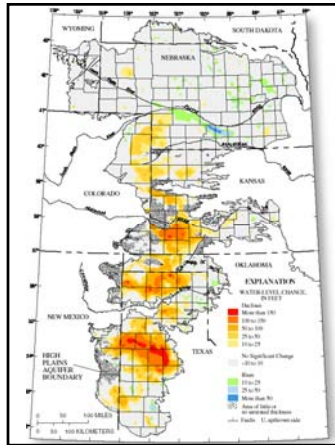
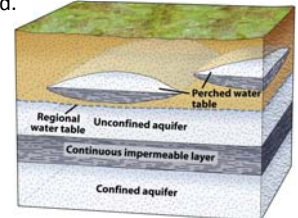


- **Unconfined aquifer** intersects Earth's surface.
  - In contact with the atmosphere.
  - Easily contaminated.
- **Confined aquifer** beneath an **aquitard**.
  - Isolated from the surface.
  - Less susceptible to pollution.



discontinuous aquitards arrest downward infiltration to the water table, forming **perched water tables**

- Overlie unsaturated material.
- Represent a “false” water table.
- More easily dewatered.

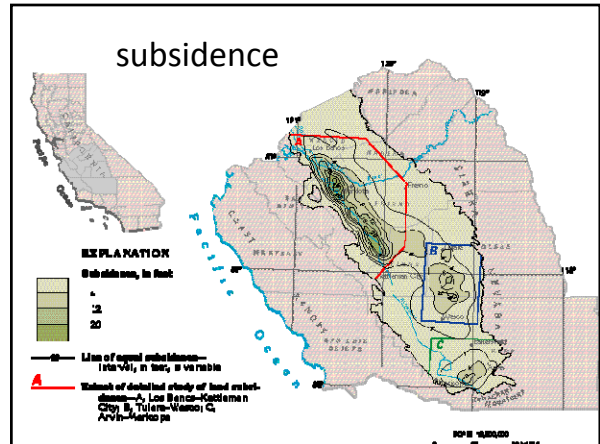


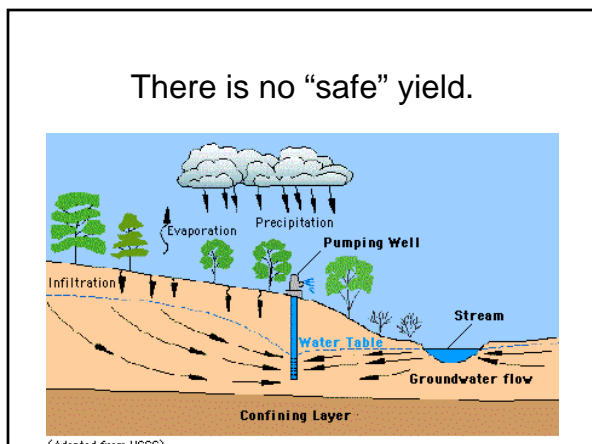
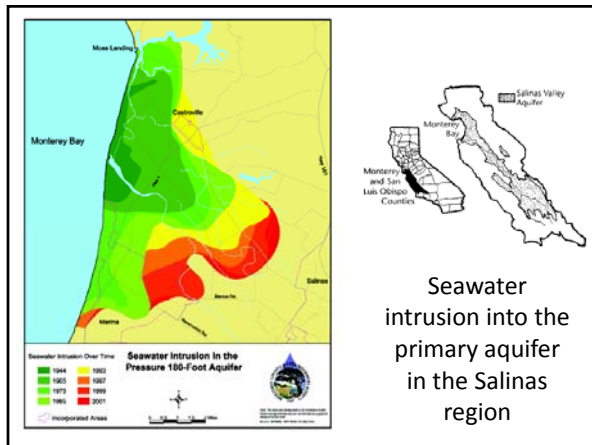
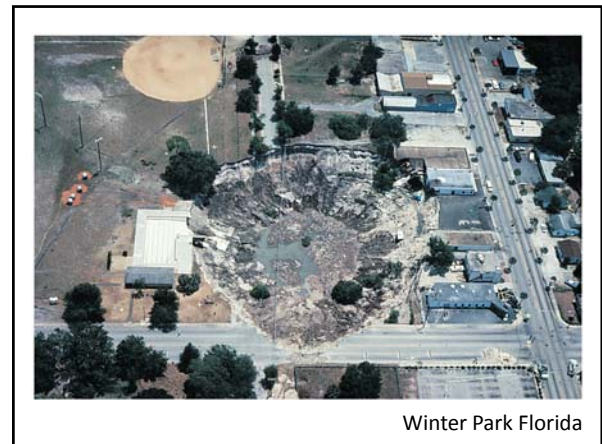
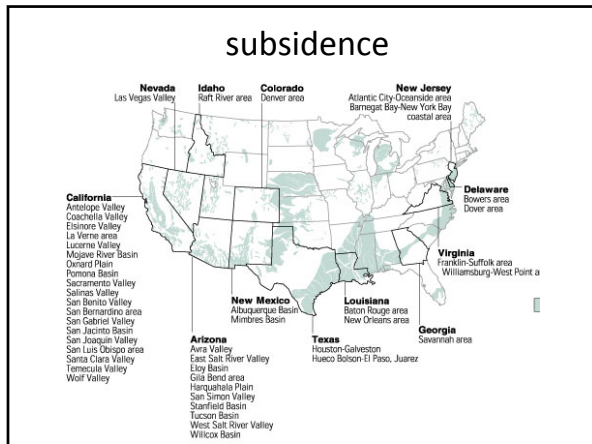
**High Plains aquifer**

- Also called the Ogallala Aquifer
- gravel and sand shed from erosion of the Rocky Mountains ~3 Ma



- Groundwater withdrawal leads to subsidence





We pump and deplete  
 Water seeks its own level  
 There is no safe yield